

BRANDMODELS

BENJAMIN BENOIT

HAIR: BROWN

EYES: BLUE

HEIGHT: 6' 2"

INSEAM: 34

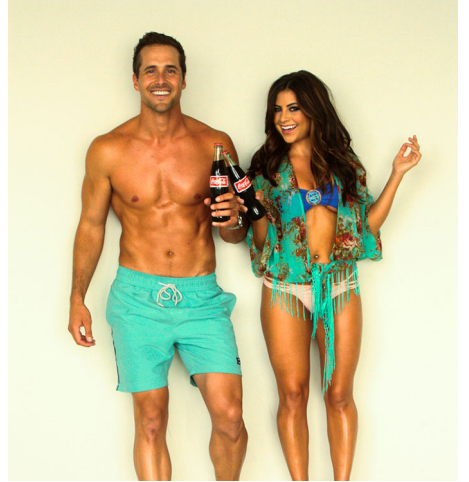
WAIST: 32

SHIRT: 16.5/34

SUIT: 42L

SHOE: 11







NEW in 2014
The Ultimate Collection

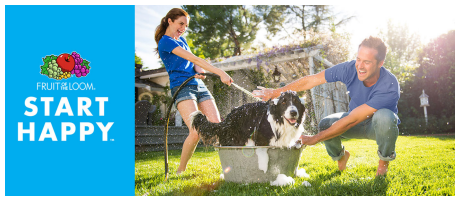
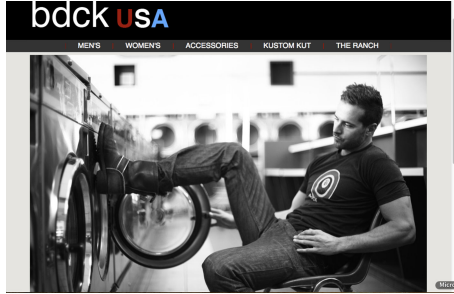
The Ultimate Collection is a tribute to our customers who are looking for a low maintenance, high quality product. This product category is defined by its blended 60/40 Polyester/Cotton fabric. This poly-rich fabric makes the product nearly impossible to shrink or wrinkle. It is best known for its "spin wash" benefits - wash it, dry it, wear it. This durable fabric is perfect for special treatments such as sublimation, dyeing and burn out. Its washability factor is extremely popular with young adults and those with active lifestyles.

8950 Easy-Care Tee
Our all new Easy-Care Tee is a 60/40 Polyester/Cotton blend with a top-of-the-line band. 4.3 oz (17.15 oz Canaball 60/40 Polyester/Cotton blend) Double-needle hanes, hem and sleeves. Super-soft, lightweight, slim fit tee. Offered in T-shirt.

- Available in the following colors:
- Black
 - Grey
 - Dark
 - Charcoal
 - Black/White Marbled
 - White



6



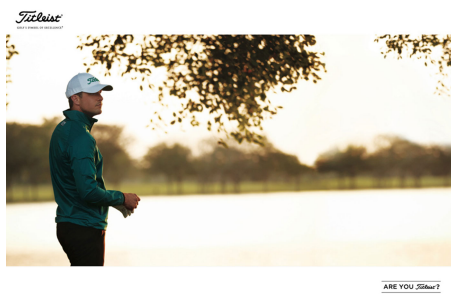


CUTTER & BUCK MEN WOMEN BIG & TALL COLLECTIONS TEAM SHOP SALE CB LIFE

Get ready for the course

Get golf-ready with two course classics. The breathable, water-resistant Adventure Jacket is packed with features for the elements, while the moisture-wicking Bogey Striped Fleece will keep you on-your game in classic stripes.

Shop CB DryTec™ Bogey Striped Fleece →
 Shop CB WeatherTec™ Adventure Full Zip →



ARE YOU 25th?

THE PERFECT GIFT: CUTTER & BUCK GIFT CARDS AVAILABLE NOW! BUY NOW →

Weather your game in style.

Our Seaview Jacket packs wind, water, and UV protection into short and long sleeve styles for top performance.

[Shop Seaview Jacket →](#)




MARGARTAVILLE

STAY | DINE | SHOP | TUNE IN | JIMMY

The Weather is Here

SAVE up to 60% OFF

MEN'S & LADIES' SHORTS*

[SAVE NOW](#)