

BRANDMODELS

NATALIE FABRY

HAIR: BLONDE

EYES: GREEN

HEIGHT: 5' 8"

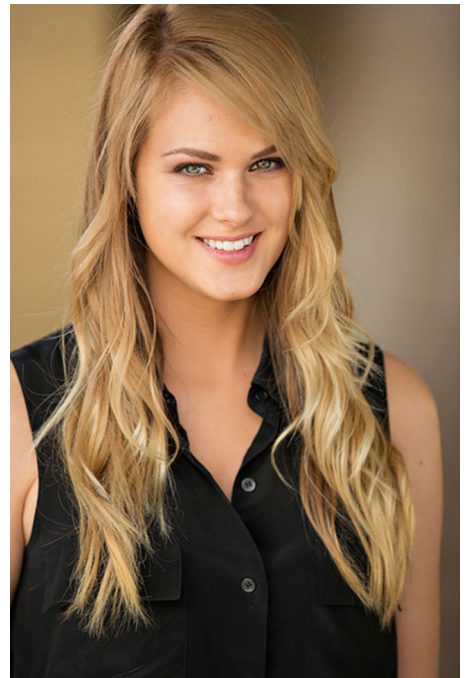
CHEST: 34C

WAIST: 25

HIPS: 35

DRESS: 4/6

SHOE: 8.5







Sunset
 | SPIRITRY |
 SHORT NECKLACE, INTERWAVING
 MULTIPLE STRANDS OF BEADS,
 AVAILABLE IN MINT, LIGHT GREEN
 AND ORANGE/TURQUOISE

Pompano
 | SPIRITRY |
 Dainty BRACELET OF
 GOLD ACCENT BEADS WITH
 ENGRAVED CIRCULAR PINE,
 AVAILABLE IN MINT/ORANGE
 AND LAVENDER/GREEN

Although Bangs
 | SPIRITRY |
 PHOTO AND BRACELET MADE ON
 WIRE SOLD INDIVIDUALLY,
 AVAILABLE IN GREEN/MINT
 TURQUOISE AND PINK/PEACH

Orchid Loop
 | SPIRITRY |
 THREE STRANDS OF GOLD
 ACCENT BEADS ADORNED WITH
 RINGS OF GOLD DRUSE BEADS,
 AVAILABLE IN TURQUOISE/PEACH

31.25 - Spring 2012 / page twenty one



Primal Love
 | SPIRITRY |
 AVAILABLE IN
 LAVENDER/GREEN
 ORANGE/TURQUOISE
 LAVENDER/GREEN
 ORANGE/TURQUOISE
 LAVENDER/GREEN
 ORANGE/TURQUOISE

Highland Rose
 | SPIRITRY |
 AVAILABLE IN
 LAVENDER/GREEN
 ORANGE/TURQUOISE
 LAVENDER/GREEN
 ORANGE/TURQUOISE



**Paint
 the Town
 Pink**





