

BRANDMODELS

TARA RICE

HAIR: BLONDE

EYES: BLUE

HEIGHT: 5' 9"

CHEST: 35

WAIST: 26.5

HIPS: 33

DRESS: 2

SHOE: 8.5















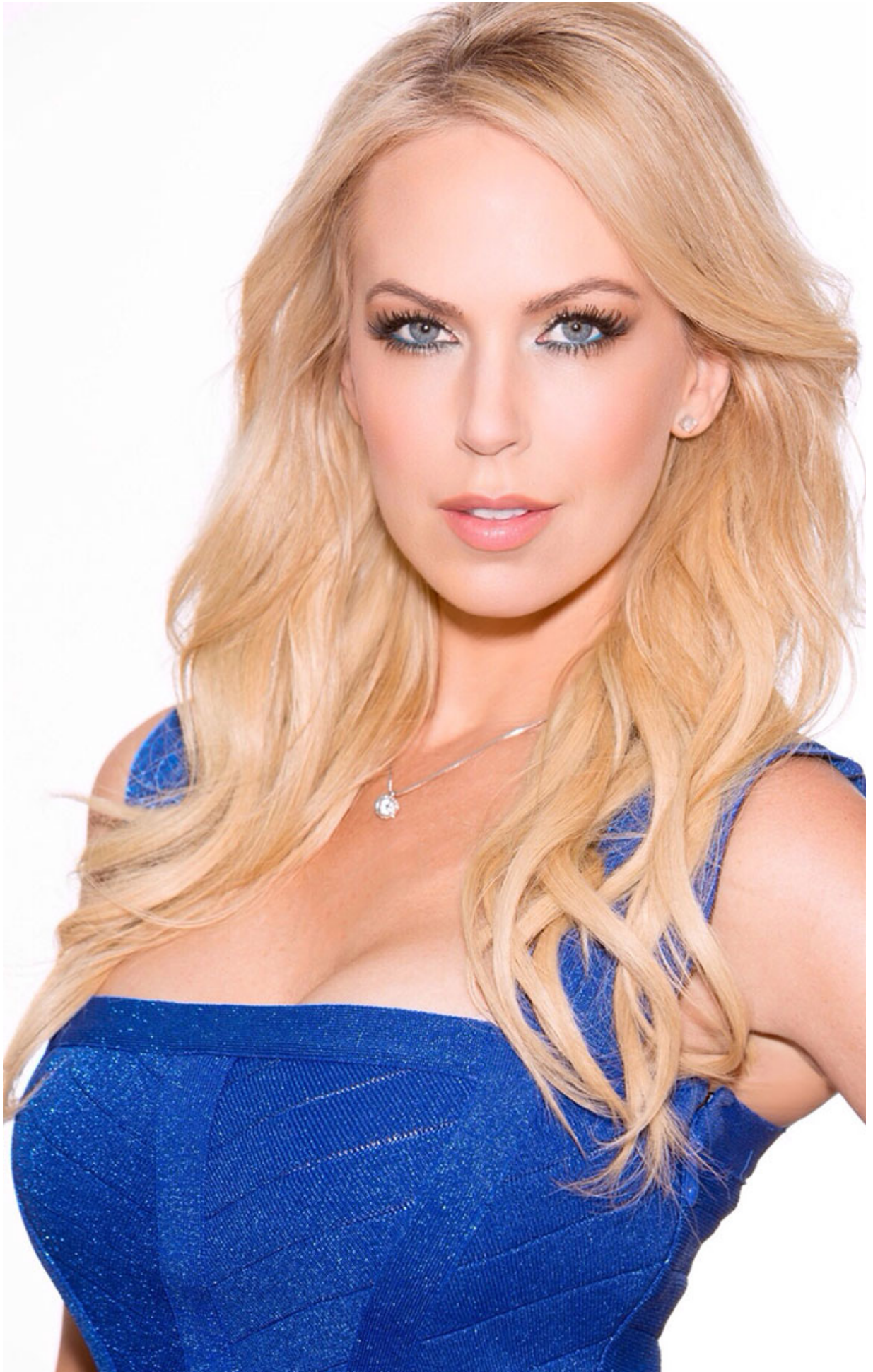














FALL 2004

APPAREL



STRIVING
FOR
EXCELLENCE



RANCH & COAST

SAN DIEGO'S ULTIMATE LIFESTYLE MAGAZINE

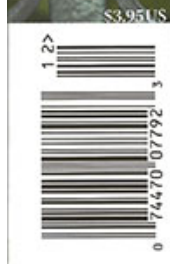
DECEMBER 2013

Addison at
The Grand Del Mar

*At Home With
Greg & Nancy
Hillgren*

New Year's
Eve Fêtes

*Holiday
Evening
Wear*



VOLUME TWENTY ONE

AVANTI DESIGNS

FROM THE PRIVATE LABEL BY G DESIGN HOUSE

