

BRANDMODELS

NIKOLAI

HAIR: BLACK
EYES: BROWN
HEIGHT: 6' 1"
INSEAM: 32
WAIST: 32
SHIRT: M
SUIT: 40L
SHOE: 12











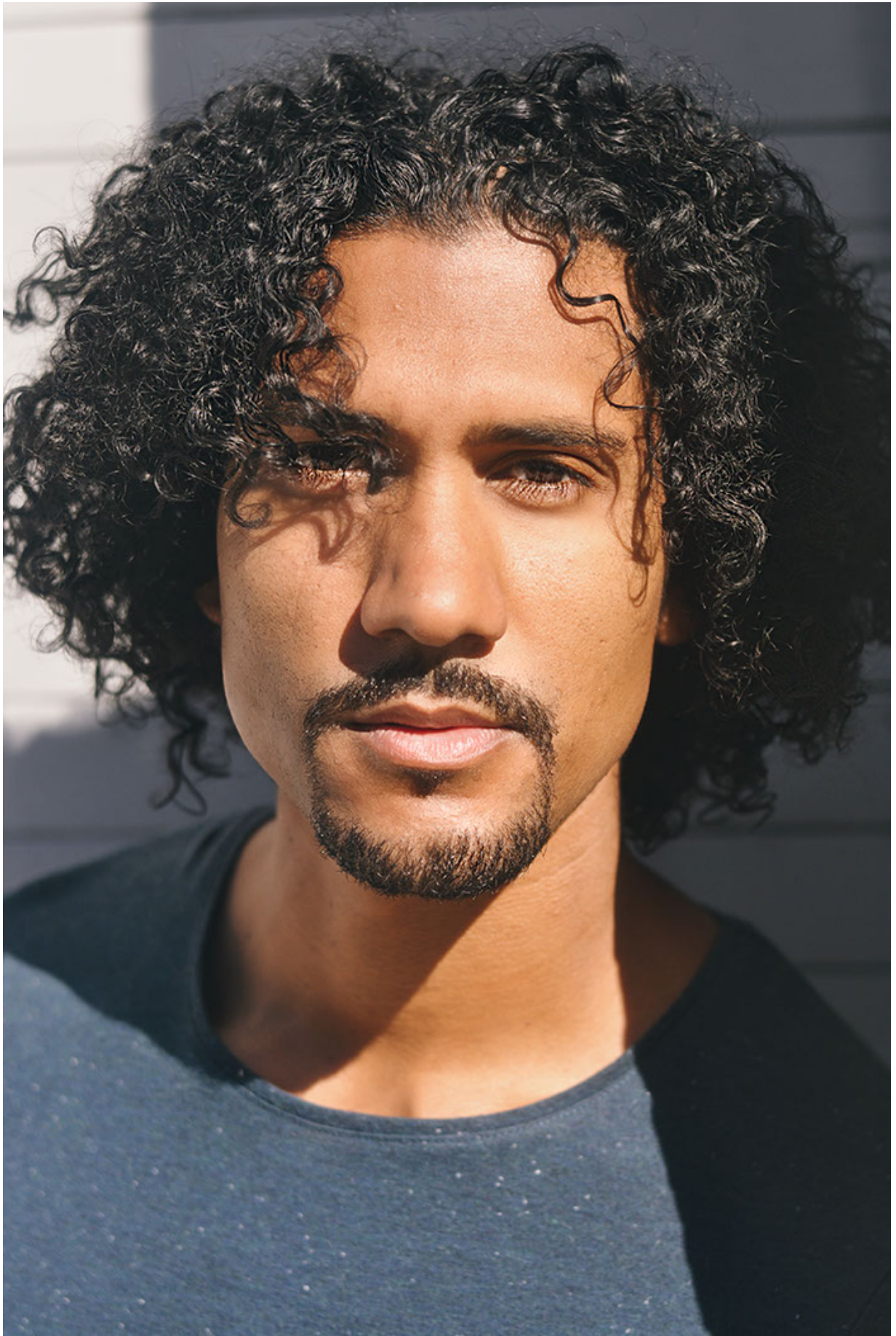


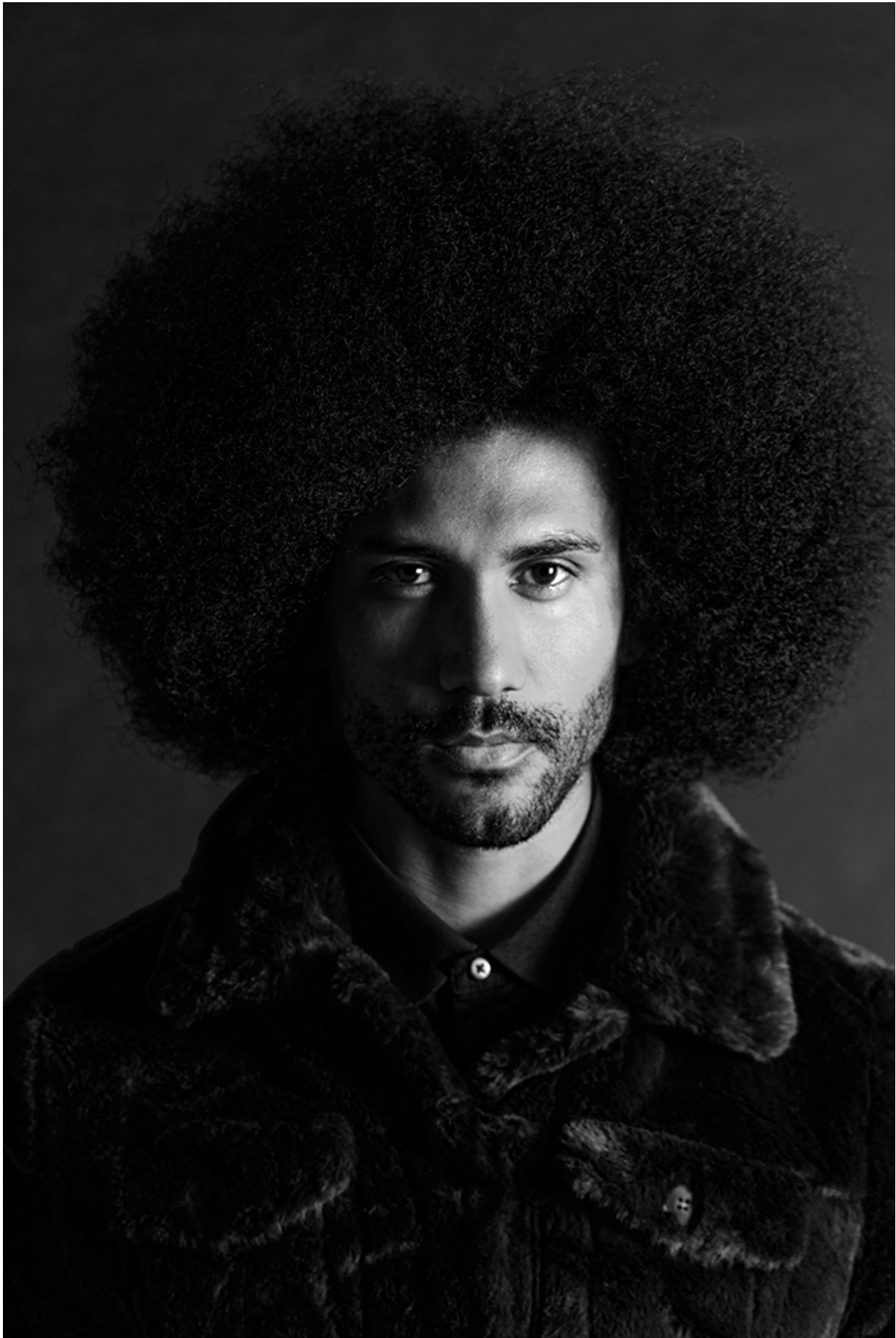








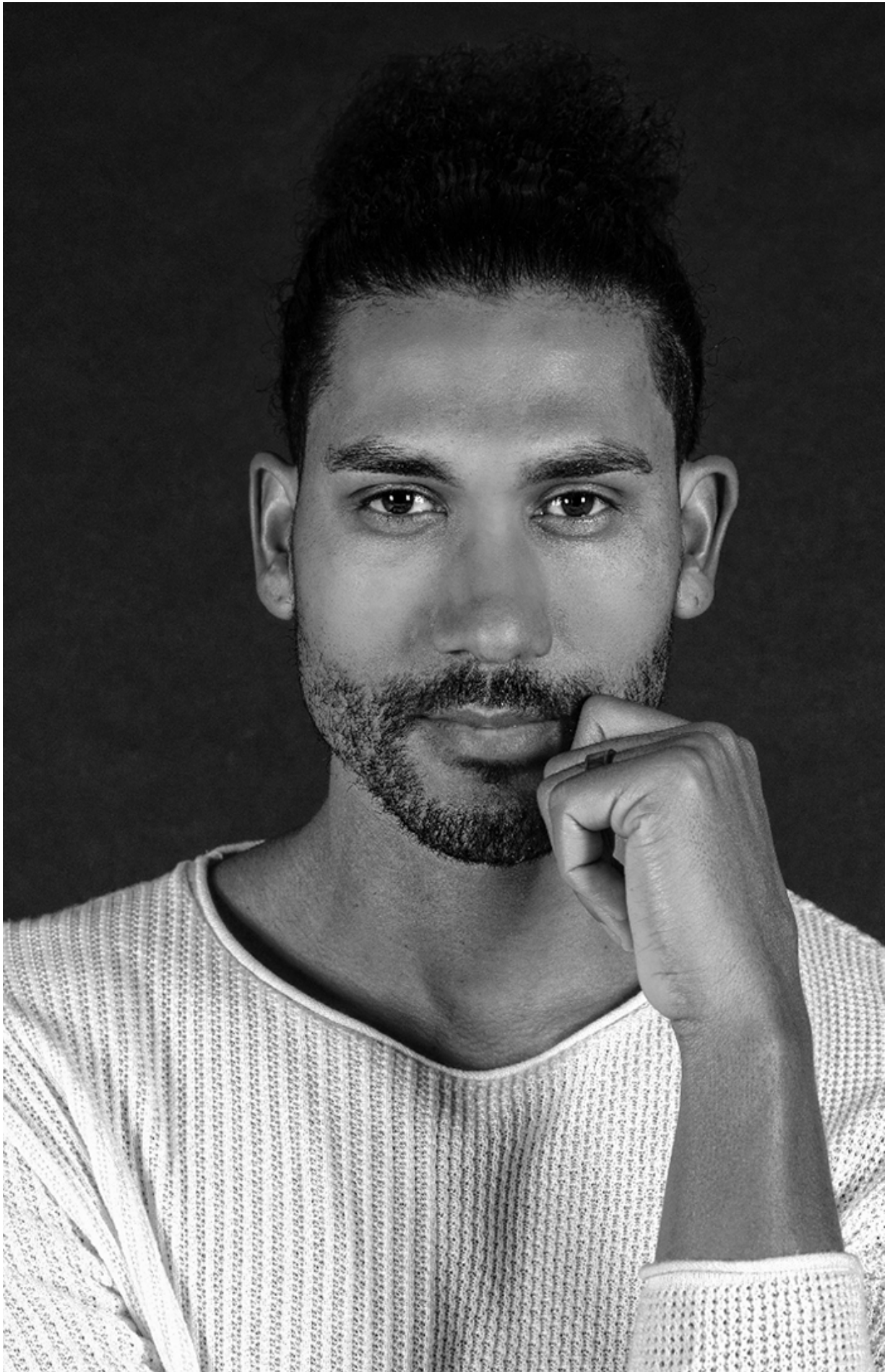








































































Stuck Zipper?

Rub soap or the graphite tip of a pencil along the zipper's teeth. The lubricating effect should help free the jam.

No More than Three Layers

If you're wearing a hero jacket like this one, keep the other layers to a minimum. Leather over a soft cardigan and a cotton button-down shirt is a sophisticated look for the office. Come 5pm, loosen the tie and you're ready for drinks at the bar.

Stick to Slim-Fit Jeans

Layers make you lose definition in your torso, so you want to gain it back below the belt. A slim cut keeps the eye moving up and down, making you look tall and thin. Patterns and colours are fine down there, but only if they differ from what's on top.

- LEATHER JACKET 86 100
- TED BAKER AT STUTTGARD
- CARDIGAN 8379 ZULIK AT SPRUE
- SHIRT 0113 WOODWORTH
- POLKA DOT TIE 0200
- (TWINPACK) EDGARS
- LEATHER STRAP WATCH 86 558
- RUSSO BOSS AT S. BACHER & CO
- LEATHER BELT 8400 OLD KHAKI
- SLIM-FIT JEANS 1010
- KINGSLEY HEATH
- ANKLE BOOTS 8900 OLD KHAKI



Cold Weather Fact vs Fiction

Many common beliefs about your body's response to cold are just wrong, says David Hourung, a professor of biology at St. Lawrence University. Let's take a look at the cold hard facts.

"Most of Your Body Heat Escapes Through Your Head"

FALSE. Heat escapes from any exposed skin. Maybe that's your head, but "if you expose an equal area on your chest or back, you'll lose the same amount of warmth," says Hourung. So wear a hat, but cover the rest of your body too.

"Women Typically Feel Colder than Men"

TRUE. Because a woman's body is better at regulating core temperature, less blood flows to her extremities and skin, making her feel colder, says Hourung. The good news? You can be a hero and offer her your jacket.

"Exercising in Cold Weather Will Make You Sick"

FALSE. Colds are caused by viruses, not weather, Hourung says. So you have no excuse for skipping workouts. "You actually burn more kilojoules in the cold." Just cover your appendages so you don't end up with frostbite.



**Keep
Lighter
Fabrics
Close
to Your
Skin**

Make your first layer either a shirt or a henley. (Starting with a jersey will make you look like you're set to take on Everest.) Then add any combo of thin puffer, cardigan or blazer – you'll be able to shrug off heavier items as you warm up.

-
- TWEED BLAZER R3 833
- BEN SHONMAN
- SLEEVELESS PUFFER R343
- ST. GOLLATH AT STUTTGARD
- PRINTED SHIRT R3 423
- TED BAKER
- LEATHER STRAP WATCH
- R3 033 FOSSIL AT S. KZREN
- WATCH GROUP
- LEATHER BELT R433 BILD KHAKI
- SLIM-FIT CHINOS R433
- JK EXCHANGE AT EDGARS
- SUEDE BOOTS R1 433
- TRENER

**Vary
Texture**

Try tweed. Why not? A variety of patterns creates a more intriguing look. But don't double up on textures. Two coarse materials worn on top of each other, for instance, will look as awkward as it feels.



Style

BY AZEEL JACOBS

PHOTOGRAPHY GARRIETH BARCLAY

LAYERS: THE NEXT LEVEL

Want to look good and stay warm this winter? Ditch the tatty parka and adopt a few rules to set yourself apart

STYLING BY
 ANDREW DAVIES
 HAIR BY
 ANDREW DAVIES
 MAKEUP BY
 ANDREW DAVIES



SO IT'S COLD, WE FEEL YOU WRAPPING UP AGAINST THE WEATHER is important—but does that mean you get in the way of your style? Not necessarily. It's all about the combinations that would never fly in warmer weather. It's ultra-modern, it's a few pieces of high-contrast fabric instead of one big chunky jacket. It's also super-functional, you can add and subtract items as needed. Here's how to pull off the layered look.

Stick to at Least One Layer Bold

Don't wear too many layers of the same color. It might think you're trying to be a punk. But it's like you're looking at a color palette. A color palette from your personality to your color. The color palette from the weather to the weather. —and so on. It's all about the combinations that would never fly in warmer weather. It's ultra-modern, it's a few pieces of high-contrast fabric instead of one big chunky jacket. It's also super-functional, you can add and subtract items as needed.

- 1. COLOR COORDINATION
- 2. TEXTURE
- 3. FIT
- 4. FABRIC
- 5. COLOR
- 6. FIT
- 7. FABRIC
- 8. COLOR
- 9. FIT
- 10. FABRIC
- 11. COLOR
- 12. FIT
- 13. FABRIC
- 14. COLOR
- 15. FIT
- 16. FABRIC
- 17. COLOR
- 18. FIT
- 19. FABRIC
- 20. COLOR











MANTRA:

"Active-inspired details give me ENERGY and ENDURANCE."

GREY'S ANATOMY™
A Medical Drama Series
© ABC Studios
**PROFESSIONAL WEAR
BY BARCO**

ACTIVE

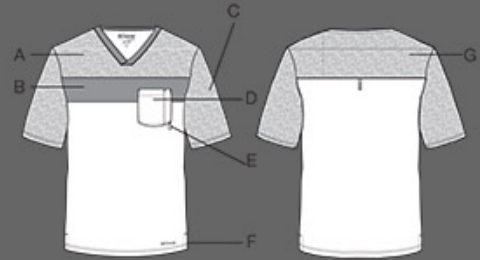
GREY'S ANATOMY™
ACTIVE

0117 - IHB New Men's Top

1-pocket v-neck color block with pen slot, mixed media top with hatch printed panels...
Modern fit

Size: XS - 5XL, CB: 29"

Color shown: IHB Indigo/Hatch Print/Black



Fabric content:
75% Polyester / 25% Rayon

- A. Printed Top Panel
- B. Contrast Center Panel
- C. Printed Sleeves
- D. Patch Pocket With Pen Slots
- E. Shock Loop
- F. Side Vent
- G. Printed Top Panel

Print and Color Block Detail





