

# BRANDMODELS

## DANNY WILLIAMS

HAIR: BLACK

EYES: GREEN

HEIGHT: 6' 1"

INSEAM: 34

WAIST: 34

SHIRT: -

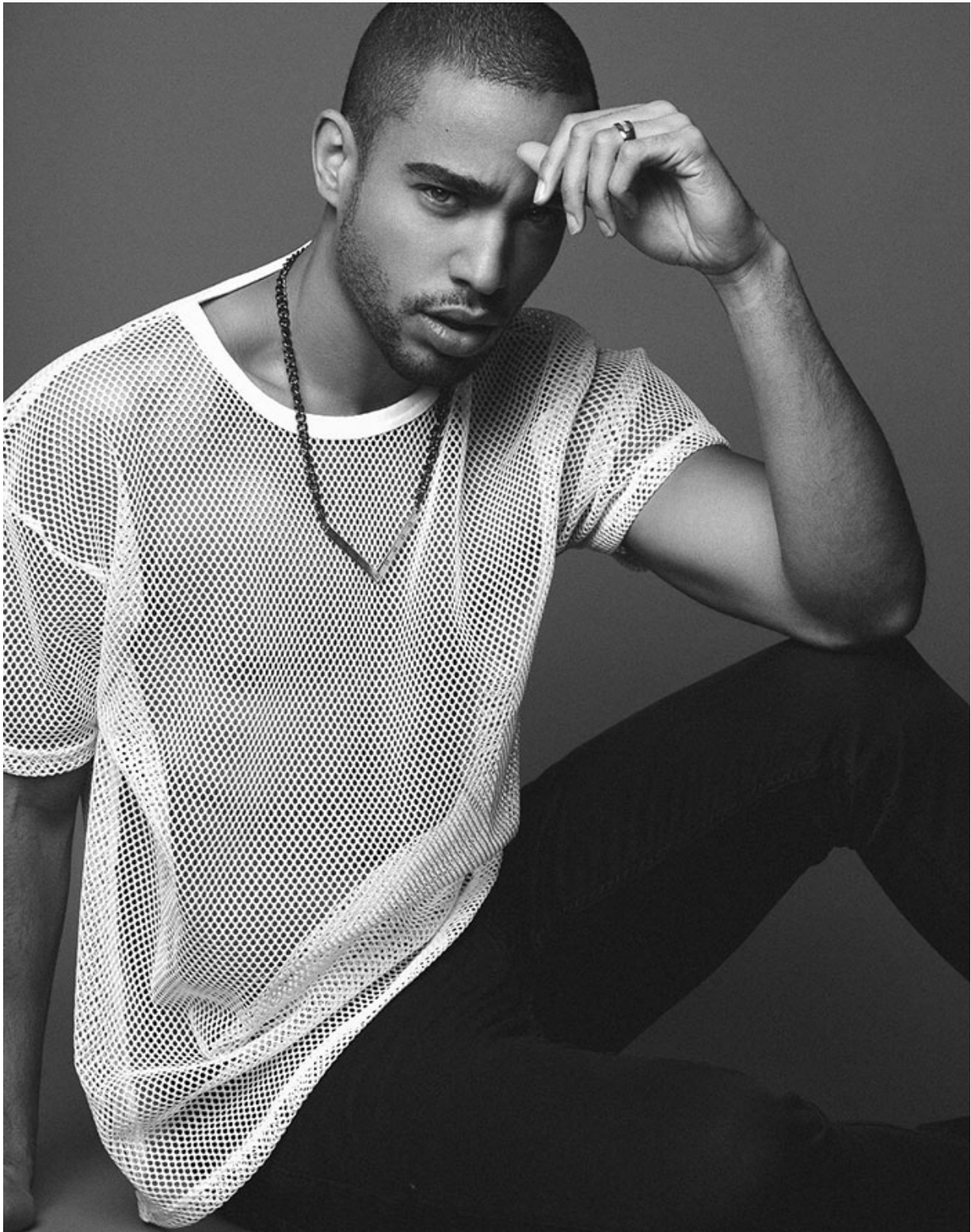
SUIT: 40

SHOE: 11.5



























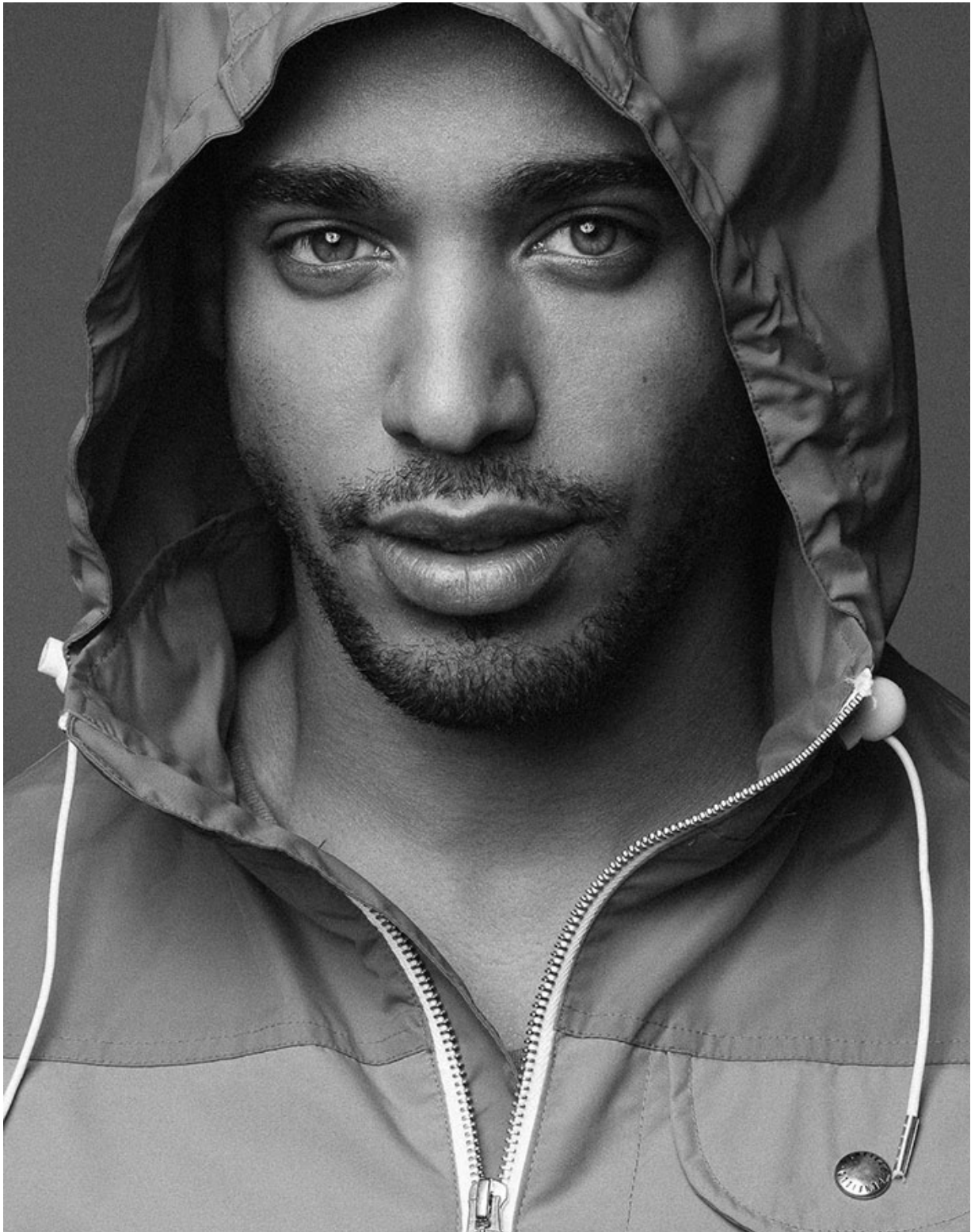










Photo: KAZUAKI NISHI, STYLING: ANNA BROWN, BRISTOL  
Tie and pattern: Canal Larkin, Diner &  
Katharine, Ties, Ties, Ties, Ties, Ties, Ties

## TWO IF BY SEA (BISCUIT)

BREGUET'S MARINE ROYALE TIMEPIECE  
ABLY SERVES DUAL PURPOSE FOR LAND-  
LOCKED SEABISCUIT-RIDING ESCAPADES  
OR MARITIME ADVENTURES.

By Jonathan Ho I can attest from personal experience that there's no greater pleasure than to feel the breeze rush against your face either accompanied with a little salty spray or by virtue of extreme torque from rapid acceleration, even if boats horsepower is one. Perhaps similarly, Breguet finds equal pleasure in decorating every inch of what is meant to be a timepiece of simple utility because it shows.

The massive 30K rose gold timepiece with sporty rubber strap is built like an indestructible tool watch but decorated in the same vein as a classic Breguet dress watch. Endorsing Breguet's design can be found on the midcase and the solidly constructed bezel. The water from between the rotating crown at 3 and alarm setting crown at 4, serves to secure the date time indicator in place while the alarm switch is located at 6 to consider wave slope. I mention this because while the watch isn't exactly waterproof (water resists at 45m), it appears that way thanks to the crown and push pieces on the flange as the case follows the piece with consistent 50M pressure.

The rubberized dial features traditional Breguet-style rose engine were 'pallucci' patterns which add elegant charm to what is meant to be purely a functional tool watch (read for 300 extra dials) and the ability to alert you to whatever time you have seen fit to set.

Yet, even with no shortage of useful details, it is the automatic Breguet caliber 519 Q, which captures me. The supple crystal caseback shows an exquisitely decorated rotor and a movement plate planarizing with paragon, never have I seen a more beautiful movement in a 50M watch.





