

BRANDMODELS

KELLY BELTRAN

HAIR: BROWN

EYES: HAZEL

HEIGHT: 5' 9"

CHEST: 34B

WAIST: 27.25

HIPS: 37.25

DRESS: 4

SHOE: 9







































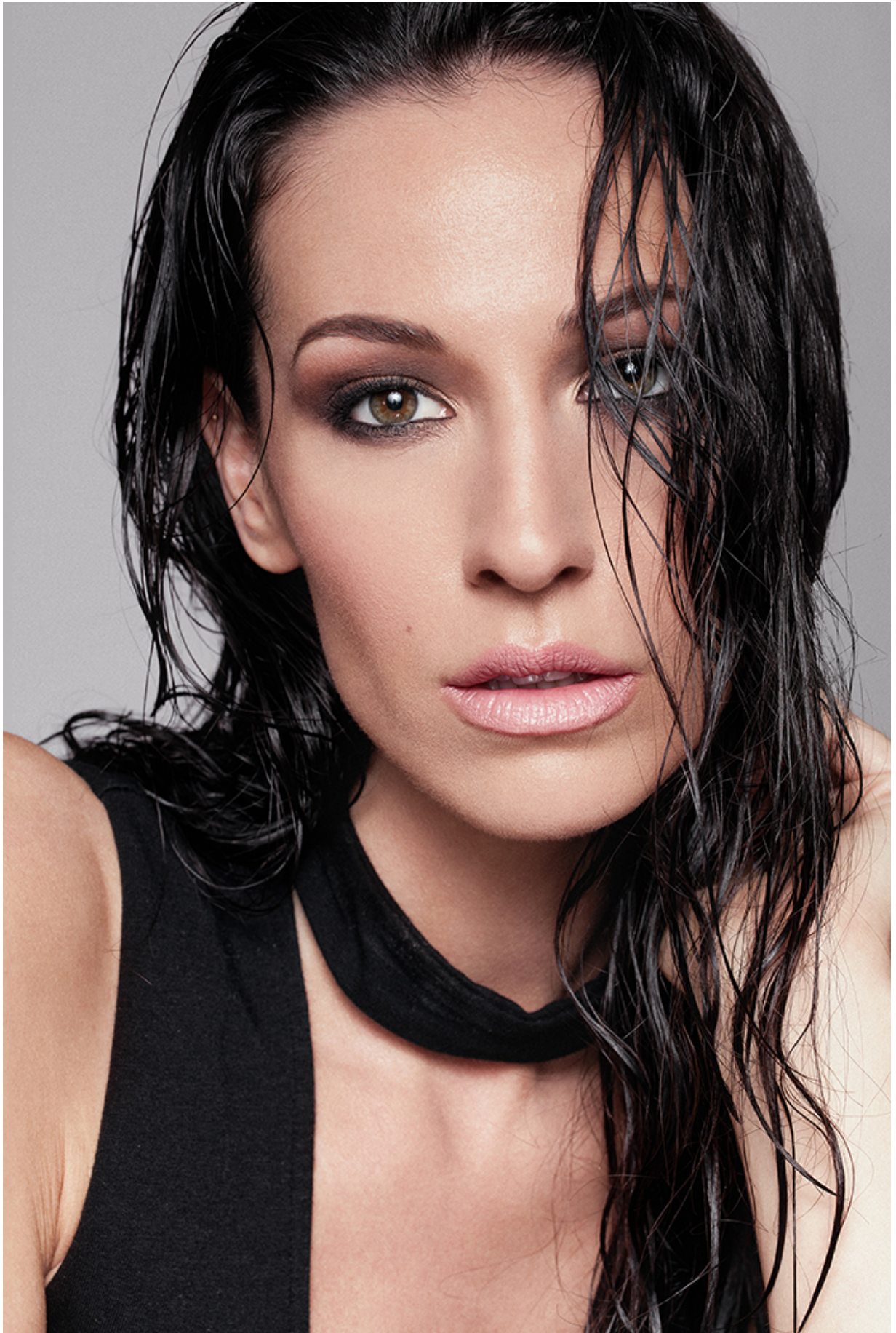






























PLEASE BE SEATED

Dress: *Decadence* by MAGGIE SOTTERO
Earrings: *Josie* pearl and crystal by HAUTE BRIDE
Bracelet: *Hannah* bracelet by CAROLEE
Tara: *Clasique* crystals by SIMAN TU
Shoes: *Cinnamon* by BENJAMIN ADAMS
All accessories available at MaidBride.com

MODEL'S MAKE UP:

Foundation: CHANTECAILLE Future Skin in the shade Vanilla
Face Powder: CHANTECAILLE Compact Makeup in the shade Peach
Blush: CHANTECAILLE in the color Emotion
Mascara: LANCÔME Hypnose waterproof mascara in the color black
Eyeliner: CHANTECAILLE Le Stylo in the shade black
Eye Shadow: NAKED COSMETICS loose powder eye shadows in the shades Naturally Nude 02, Sierra Nevada 01 and Blushing Bronze 01
Lipstick: CHANTECAILLE in the shade Nymphia
Lip Gloss: CHANTECAILLE in the color Love

Fall Order

Finding the perfect wedding venue, the perfect caterer, the perfect band and—hey, let's face it—the perfect husband, takes hard work and more than a little luck. Picking the perfect dress? Are you kidding...that's the fun-part!

*Photography by
Nadine Raphael*

PATH FINDER

Dress: *Novella* by MAGGIE SOTTERO
Hair: *Arabella* by *Whispering Bloom* styled
by MODELBRIDE. Earrings: *Flower* drop
by MARIA ELENA. Bridal veil: *Caribbean*
crystal by HAUTE BRIDE

*All accessories available
at ModelBride.com





















