

BRANDMODELS

CHRIS RODGERS

HAIR: BROWN

EYES: HAZEL

HEIGHT: 5' 11"

INSEAM: 31

WAIST: 31

SHIRT: 15.5/32

SUIT: 40R

SHOE: 10

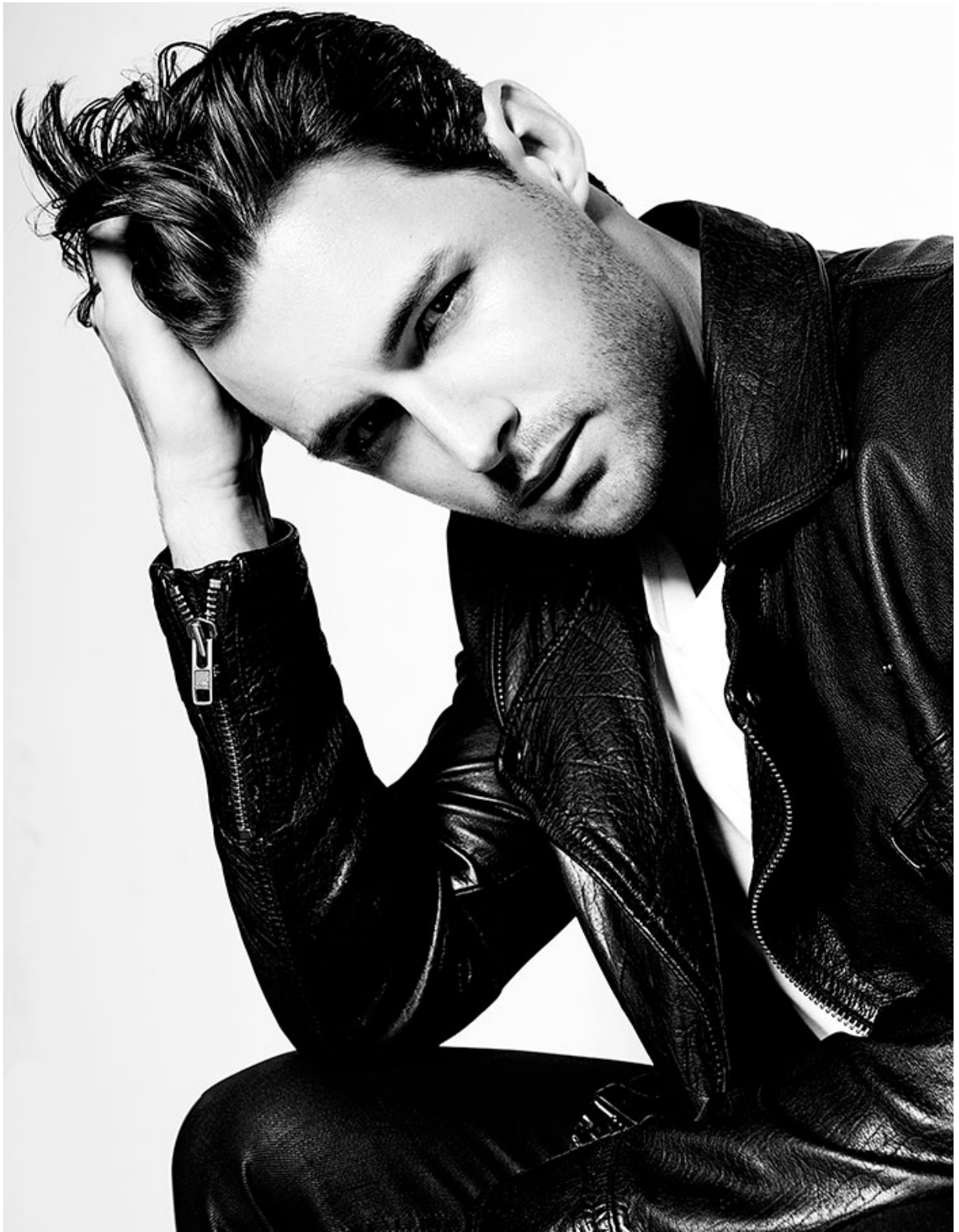
































CUTTER-AND-CASHMERE BLAZER
 \$2,200 AND CUTTER-AND-CASHMERE SHIRT
 \$200 BY FERRAGAMO DESIGN, GILY
 POCKET SQUARE \$60 BY BRUNO
 MAGLI, COTTON JEANS \$120 BY FILIPPO
 SPENGLER, WATER PROOFING
 \$100 AND A BICYCLE \$400 BY
 HOLEY, AVAILABLE AT TOURNAI
 GROOMING BY JEE CLEMENT

Shot on location at The Neon Museum and Red
 Rock Canyon National Conservation Area
 Founded in 1998, the Neon Museum is a two-acre out-
 door exhibition space that collects and preserves iconic
 signs from the Las Vegas Strip. There are nearly 150
 signs in the museum's current collection, each offering a
 unique perspective and link to Las Vegas's history.
 Located 17 miles west of the Strip, Red Rock Canyon
 was designated as Nevada's first National Conservation
 Area. The 100,000-acre area is home to extensive
 landscapes and wildflowers more than 20 million years
 old.
 Shot with the assistance of the Las Vegas Convention
 and Visitors Authority (www.lvcva.com)

BLAZED IN THE HOOD



REFINED IN

SOMETIMES, A MAN NEEDS TO DRESS UP WITHOUT LOOKING SO, YOU KNOW, *DRESSED UP*. THOSE OCCASIONS CALL FOR A DIFFERENT BREED OF TAILORED WEAR: UNFUSSY, UNSTARCHED, FULL OF COLOUR, DEPTH AND CHARACTER.

THE ROUGH

PHOTOGRAPHS BY MATT DOYLE & STYLING BY ALVARO SALAZAR

PHOTOGRAPH BY MATT DOYLE
STYLING BY ALVARO SALAZAR
JACKET, POCOCK SQUARE, CLOTH BY BOSS
COTTON T-SHIRT BY CALVIN KLEIN
ELLERRE SHOES BY CALVIN KLEIN
WATCHING ACCORDION BENCH (PART OF
RUBEN) AVAILABLE AT TOWN&COUNTRY





















U.S. POLO ASSN.
SINCE 1890







