

BRANDMODELS

TRADELL HAWK

HAIR: BLACK
EYES: BROWN
HEIGHT: 6' 1"
INSEAM: 32
WAIST: 32
SHIRT: 16
SUIT: 40R
SHOE: 11.5

LOCKIT DOWN

STRADDLING A STYLISH LINE BETWEEN SMART AND CASUAL, WITH JUST THE RIGHT AMOUNT OF COMFORT AND SWAGGER, THE PUFFER JACKET IS FAST BECOMING AN ICONIC COOL-WEATHER STAPLE. IT'S TIME TO GET PUFFED UP

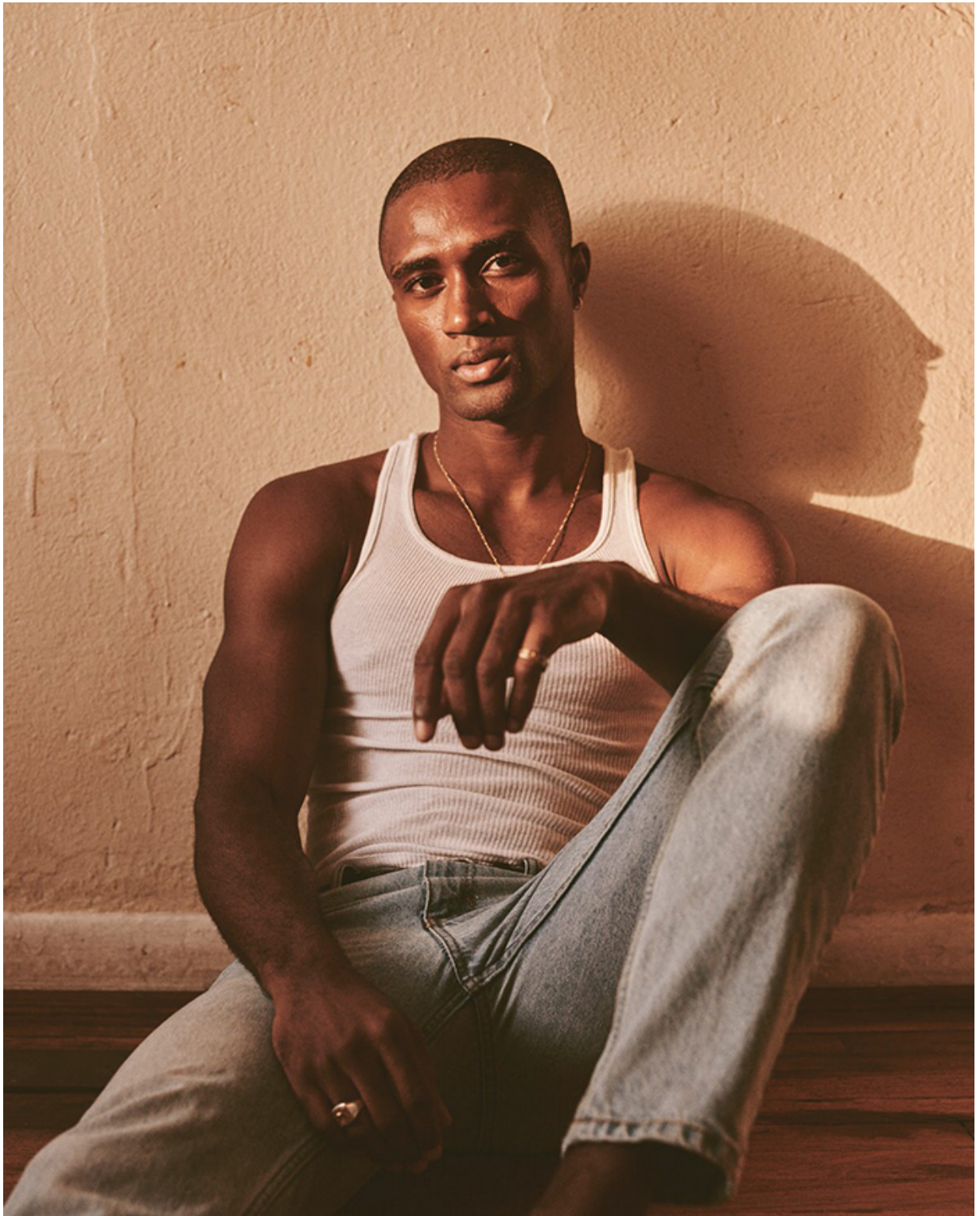
AUTUMN 2017

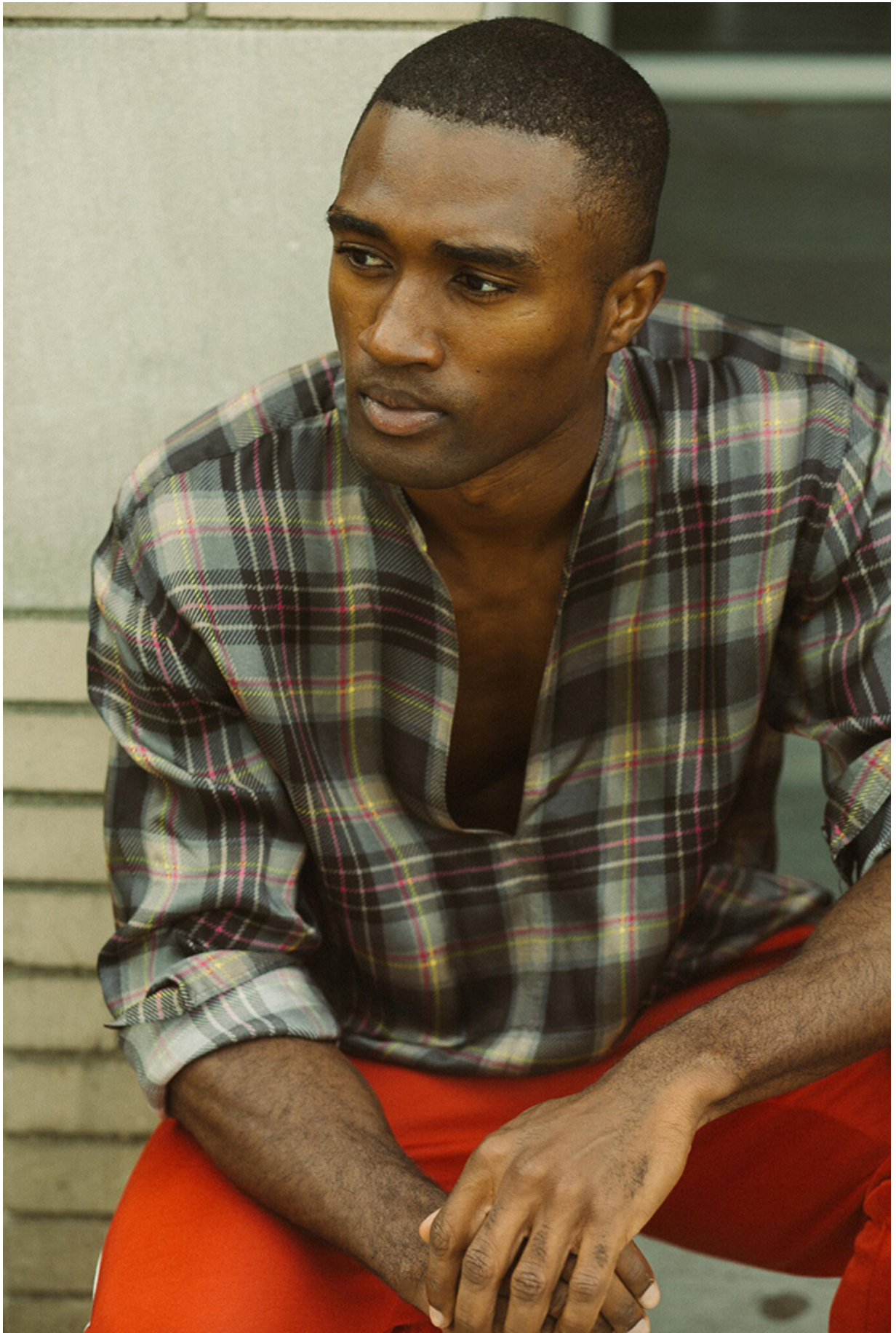
MAKE THE CUT

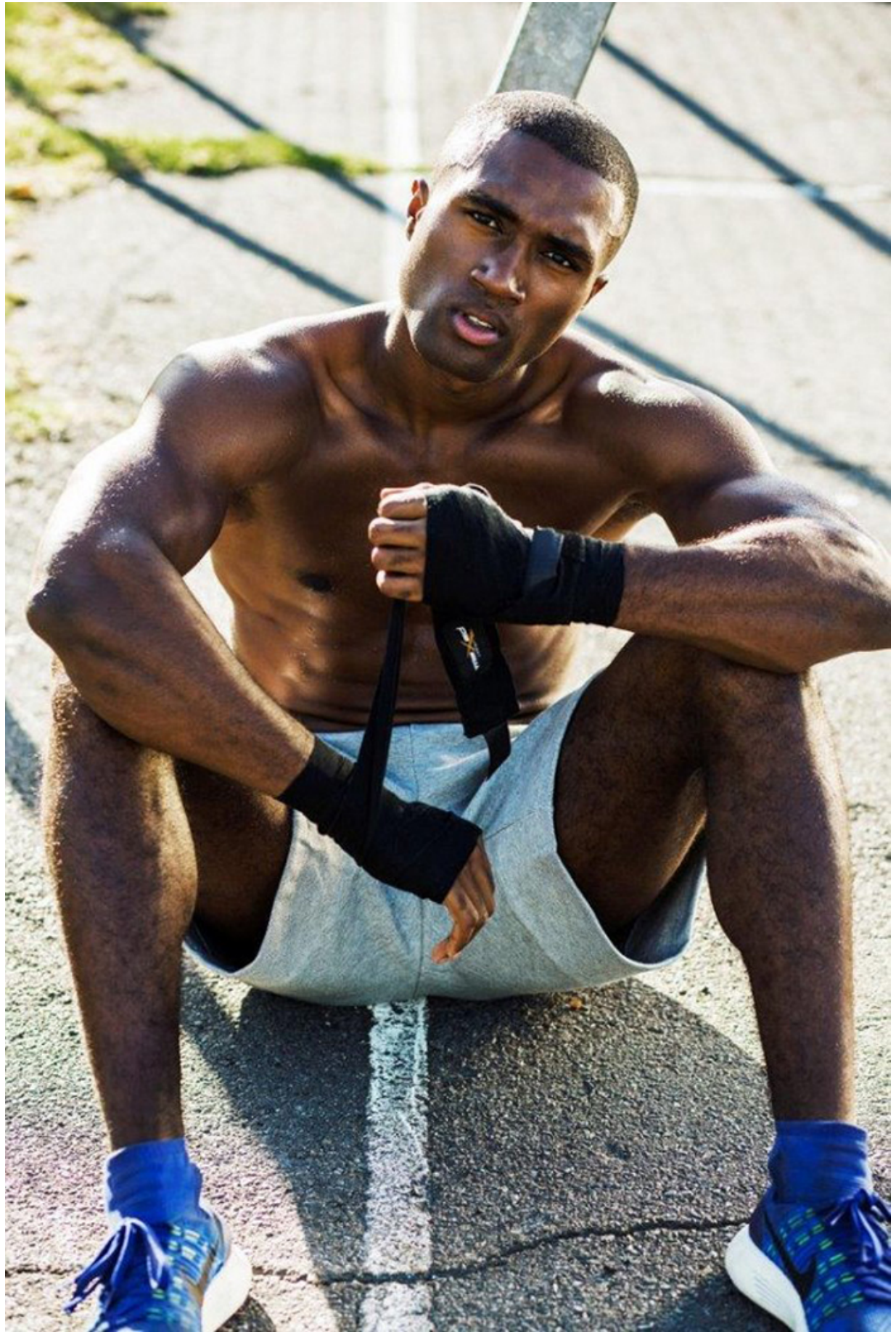
If you associate puffers with cold, early-morning treks to the trail or the train, think again: the right one will make an impression in the office, too. A quilt in a luxurious texture works well layered under a blazer, keeping you warm and helping you stand out in a sea of soulless suits.

SUIT JACKET \$3 699 (WITH PANTS) PIERRE CARON AND POCKET SQUARE \$48 EDITED BOYS SHIRT GILET \$29 TASS SHIRT \$699 DICKIES TIE \$223 TERMAN WATCH \$2 650 SHAKU AT CAR ORIGINALS TROUSERS \$999 ZARA WOVEN BELT \$229 \$149

FASHION EDITOR
ALEXZ JACOBS
PHOTOGRAPHS
JACQUES WEYERS









COVER UP

With the built-in insulation of their down filling, puffers are a winter staple. Another warming option: quilting, or the practice of sewing two or more layers of fabric together to make a thicker padding. This can tone down the fullness of a puffer jacket, while making it versatile enough to wear as a top or bottom layer. Bonus: this one's waterproof.

SUNGLASSES R2 300 RAY-BAN AT L'UOZITICA
TRANSIT JACKET R2 199 FIRST ASCENT
HUDSON INKIGO TOP R2 95 G STAR RAW
SHERMAN WATERS R2 800 HUNTSVILLE
AT CUB GIFT SALES TOKYO APEX CHINOS
R2 299 DENHAM AT INFINITE 60 BOOTS
R4 699 G STAR RAW

TO ATTENTION

The bomber-style silhouette adds a masculine, military-esque edge to your wardrobe. If you're unsure about olive green, don't be: it goes well with most neutral colours, like grey or black, and suits a pair of jeans or chinos, so will slot seamlessly into your wardrobe.

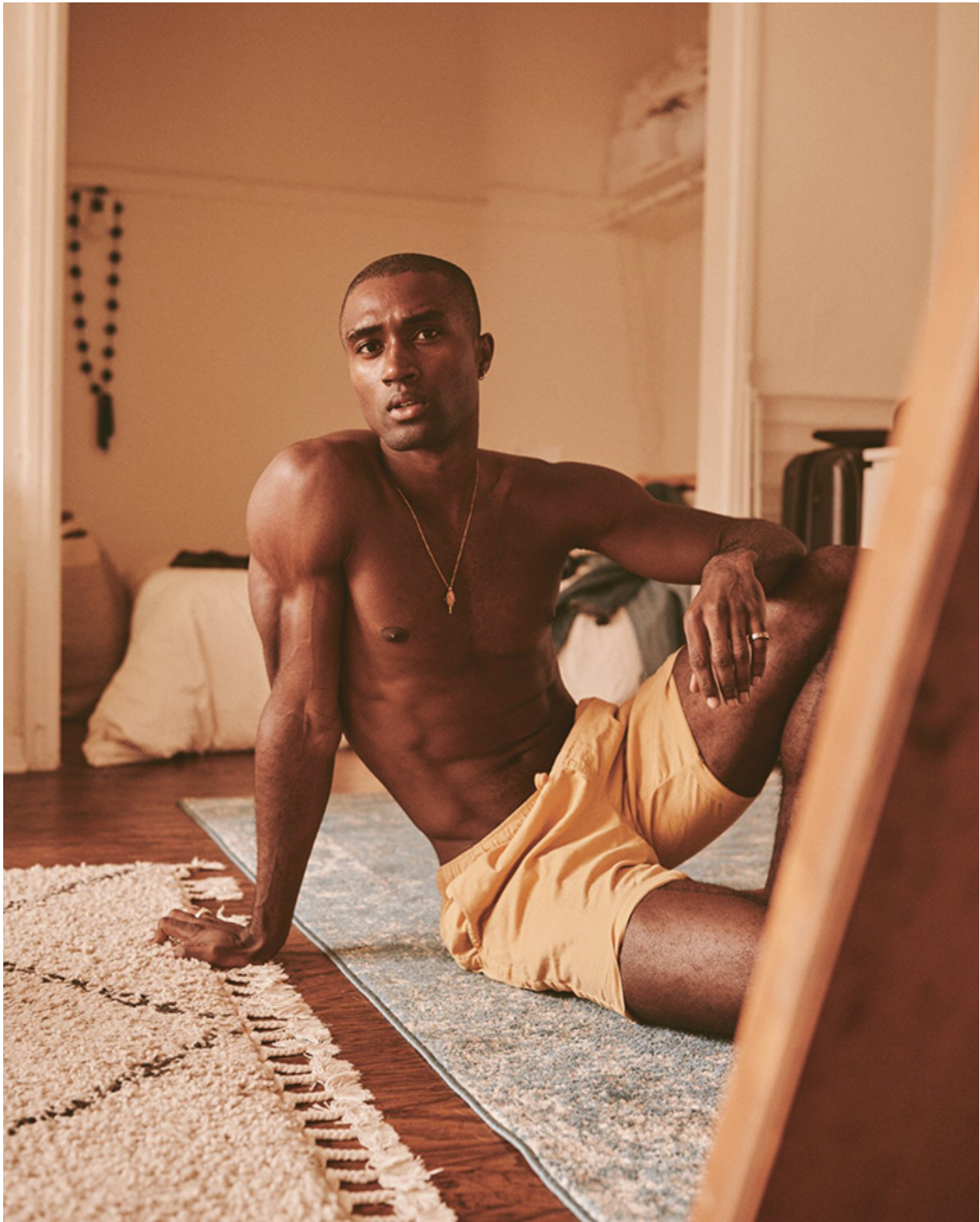
INDIANA SUNGLASSES R6 877 TOM FORD
AT SIM EYEWEAR JACKET R5 180 ANTONY
MARIATO CLOTHING & COUNTRY SHIRT R480
OLD KHAKI TIE R248 ENIGMA AT SPRUE DIVE
WATCH R14 600 GUCCI AT PICOT & MOSS
HYPERFLEX JEANS R4 400 REPLAY
HI-TOPS R1 795 CARVELLA AT SPITZ

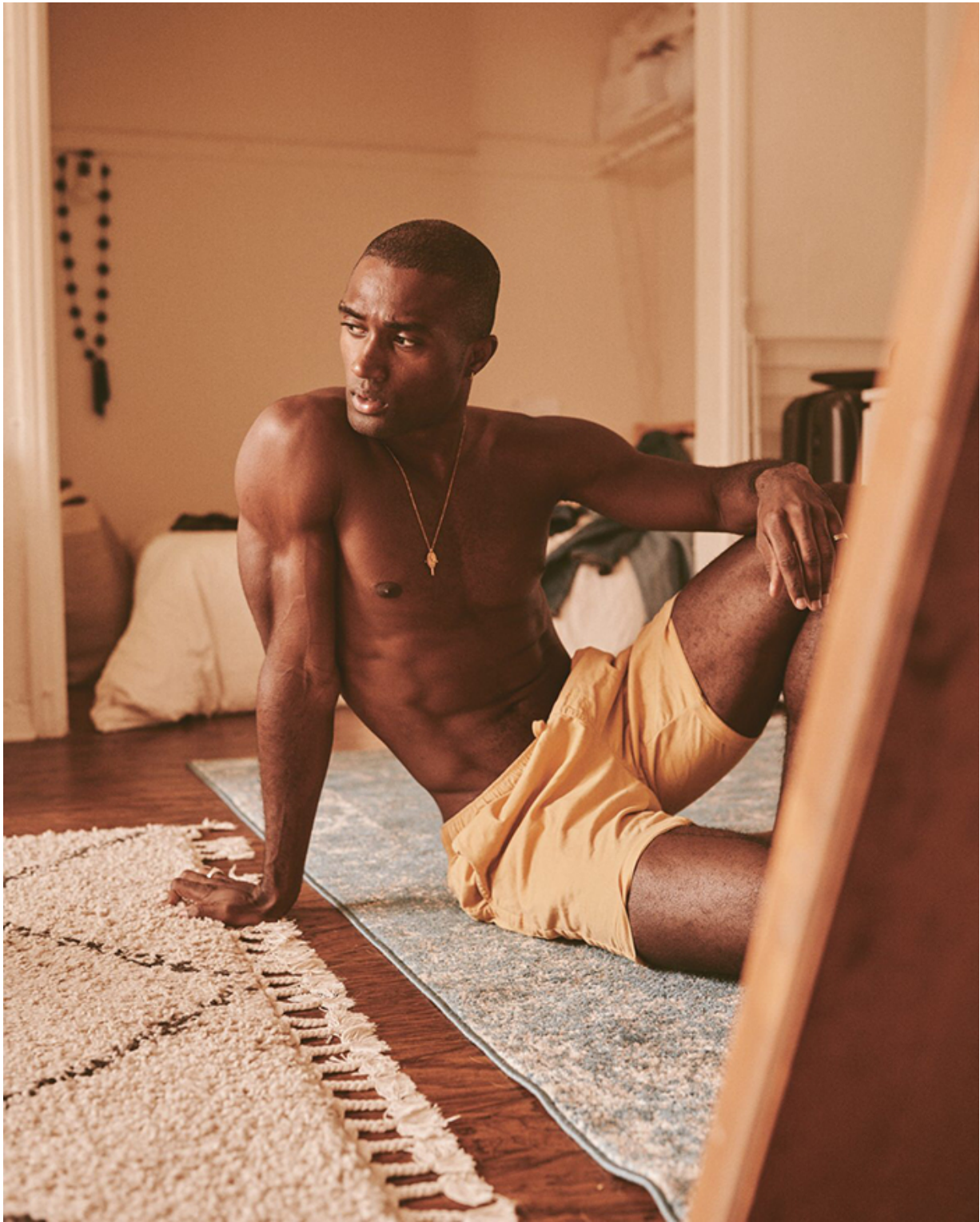


CLIMB THE RANKS

Store racks used to be stacked with black – now, you can find puffers like these: interesting, more refined, and not so puffy. Plus, they have a matte finish and ultra-light fabric. Green-on-green brings some crucial detail, but stay away from cargo pants – flannel or denim is a smarter approach.

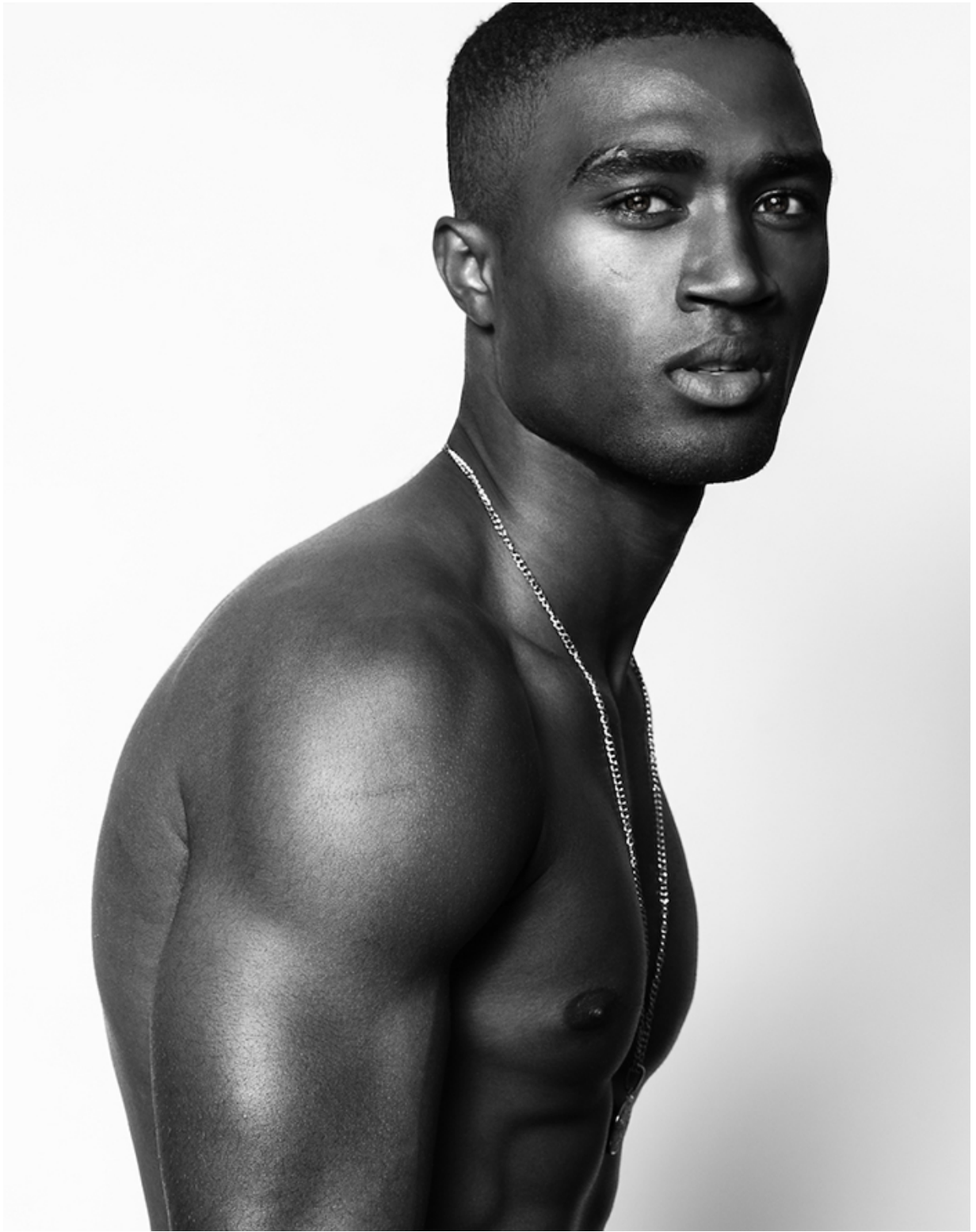
SLADE PUFFER R1 295 **OLD KHAKI DUKONO SLUB SWEATSHIRT** R1 999 **G-STAR RAW CHAMBRAY SHIRT** R379 **H&M CLASSIC OXFORD WATCH** R3 499 **DANIEL WELLINGTON AT TRESSER BRANDS WOOL TROUSERS** R2 999 **SCOTCH & SODA**













TURN UP
YOUR
COLOUR

“Doubling down on denim? Good call. A bold gilet spices up the look, acting as the fresh focal point of a subtle, smart outfit. Too stuffy? Keep the bottom layers buttoned, and leave the puffer unzipped.”

GILET R639 240A DENIM JACKET R4 300
REPLAY PARACORD SWISS ARMY WATCH R3 895
VICTORINOX AT FOOT & MOSS JEANS R2 499
DENHAM AT INFINITE 60 BOOTS R4 499 © STAR RAW

