

BRANDMODELS

SUMMER WYMAN

HAIR: BLONDE

EYES: BLUE

HEIGHT: 5' 7"

CHEST: 34CD

WAIST: 26

HIPS: 34

DRESS: 2

SHOE: 7.5













































TERESA KOEHLER
photography



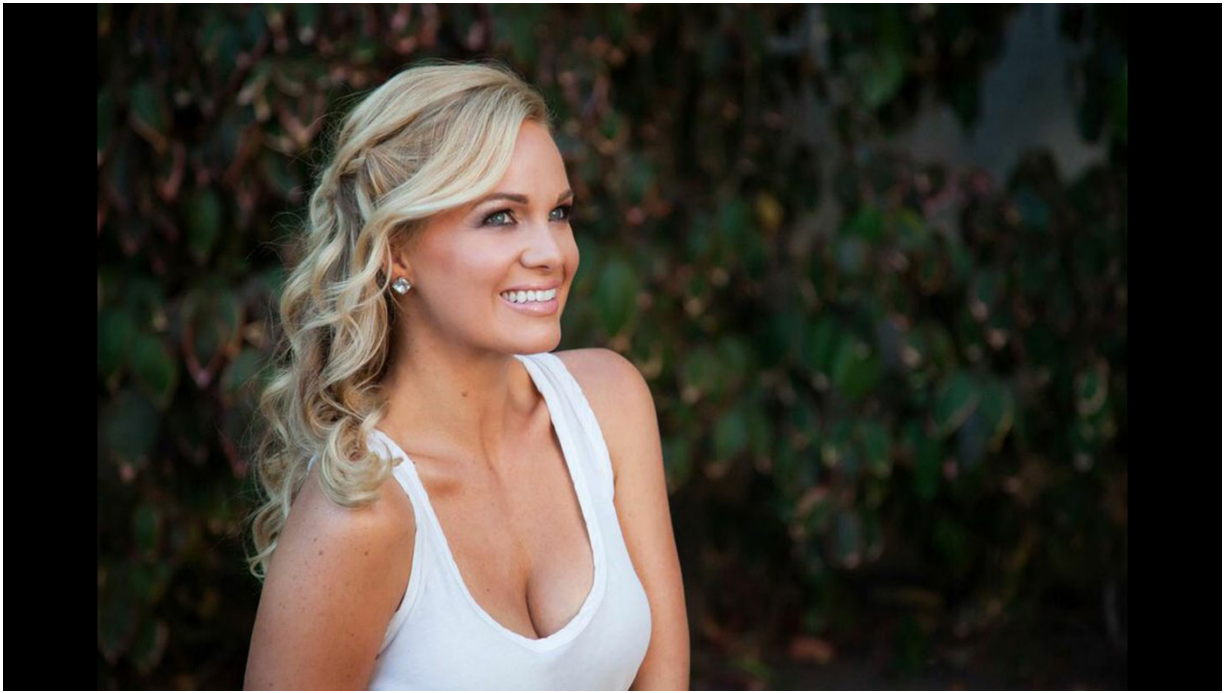














TERESA KOEHLER
Photography