

BRANDMODELS

KELLY DOWDLE

HAIR: BLONDE

EYES: BLUE

HEIGHT: 5' 9"

CHEST: 34C

WAIST: 26

HIPS: 35

DRESS: 4

SHOE: 9



































































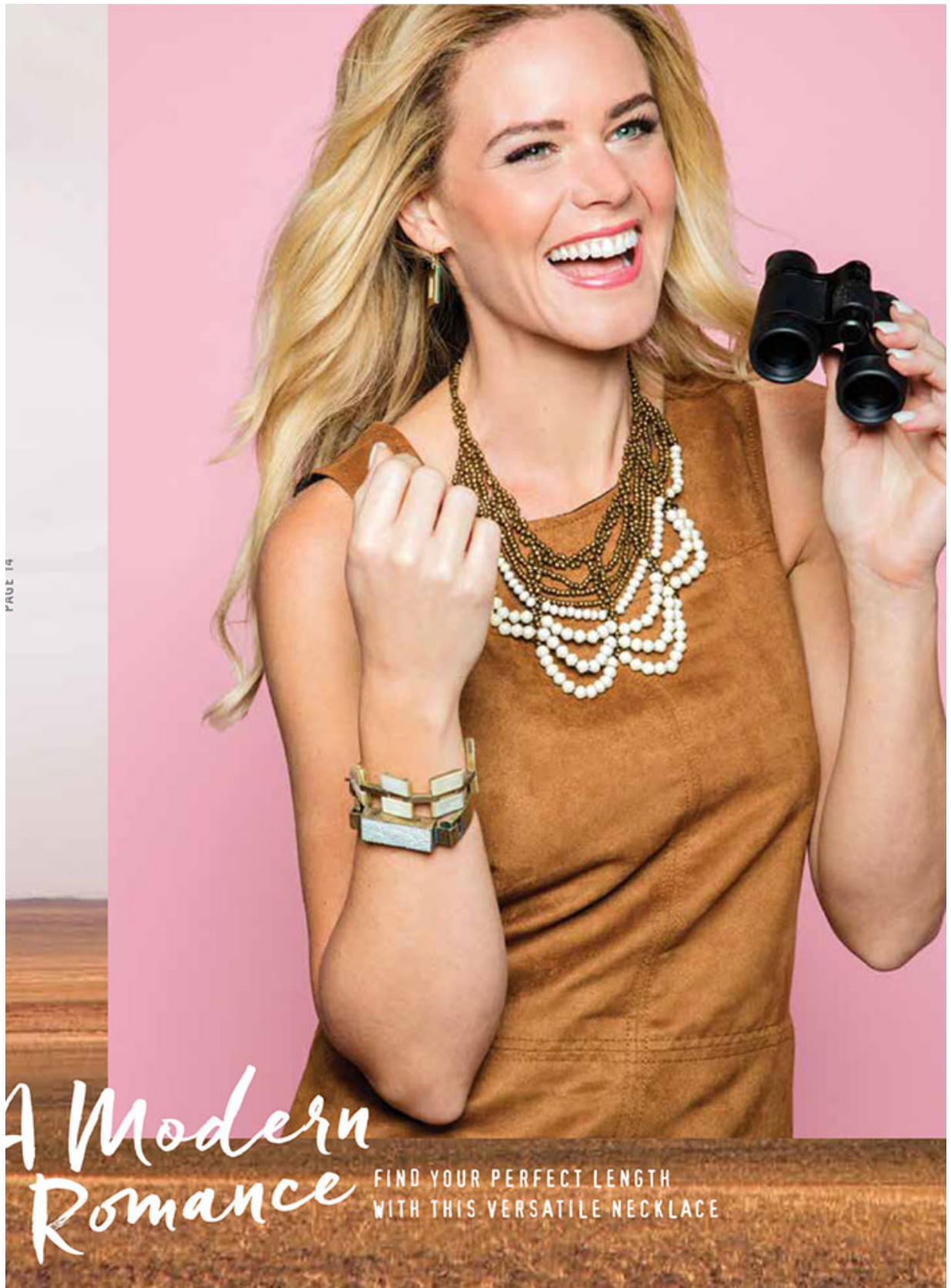












A Modern Romance

FIND YOUR PERFECT LENGTH
WITH THIS VERSATILE NECKLACE





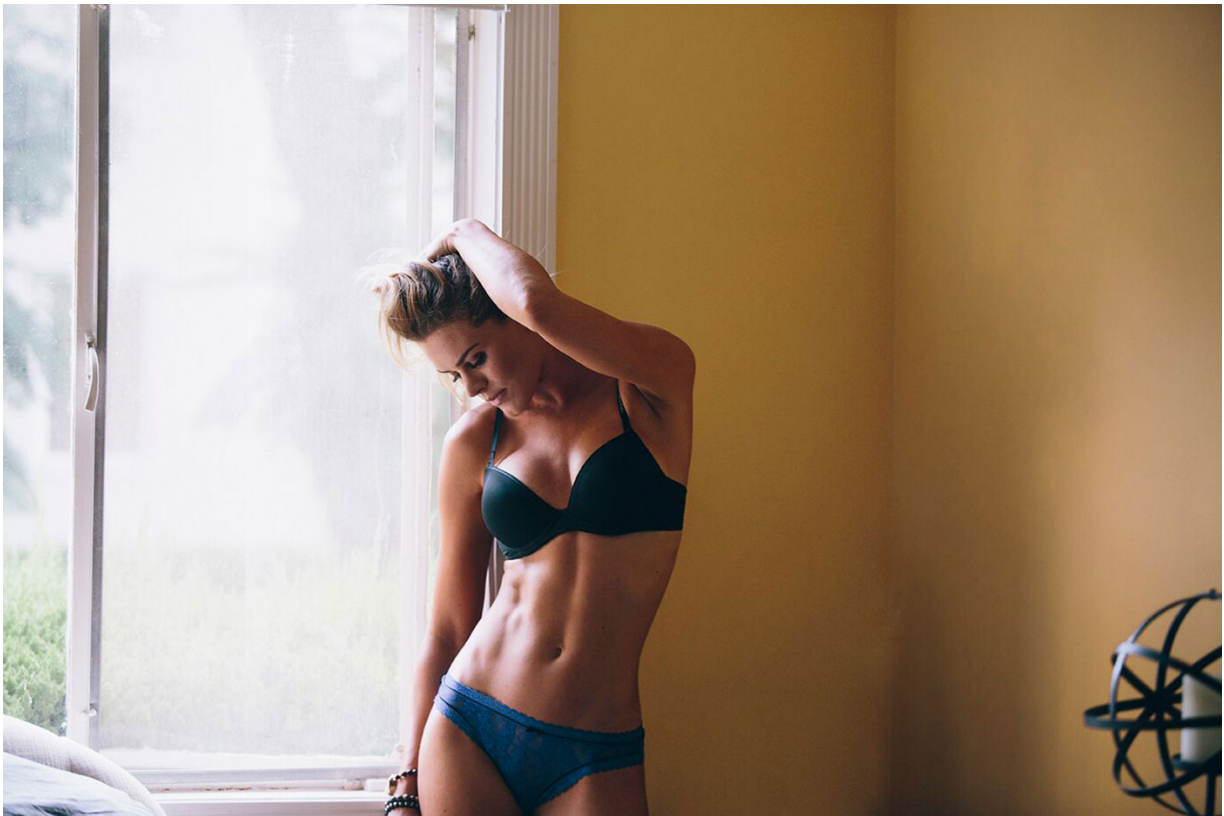
















Handmade in Haiti

THE MERIDIAN CLUTCH IS DESIGNED FOR THE GIRL ON THE GO

Through the looking glass

ELEGANT STYLES FEATURING HANDCRAFTED GLASSWORK



- NEW!** **A** SIREN SONG NECKLACE India, Handcrafted Glass Beads, Mixed Metal, 30"L, 3"L Extender Chain, NE255TA \$58
- B** EVERLAST BANGLES India, Glass Seed Beads, Mixed Metal, 2.75" Diameter, BR141CF \$30
- C** GLASSWORK EARRINGS Peru, Hand Cut Glass, Brass, 1.75"L, .5"W, EA162FE \$78

















































